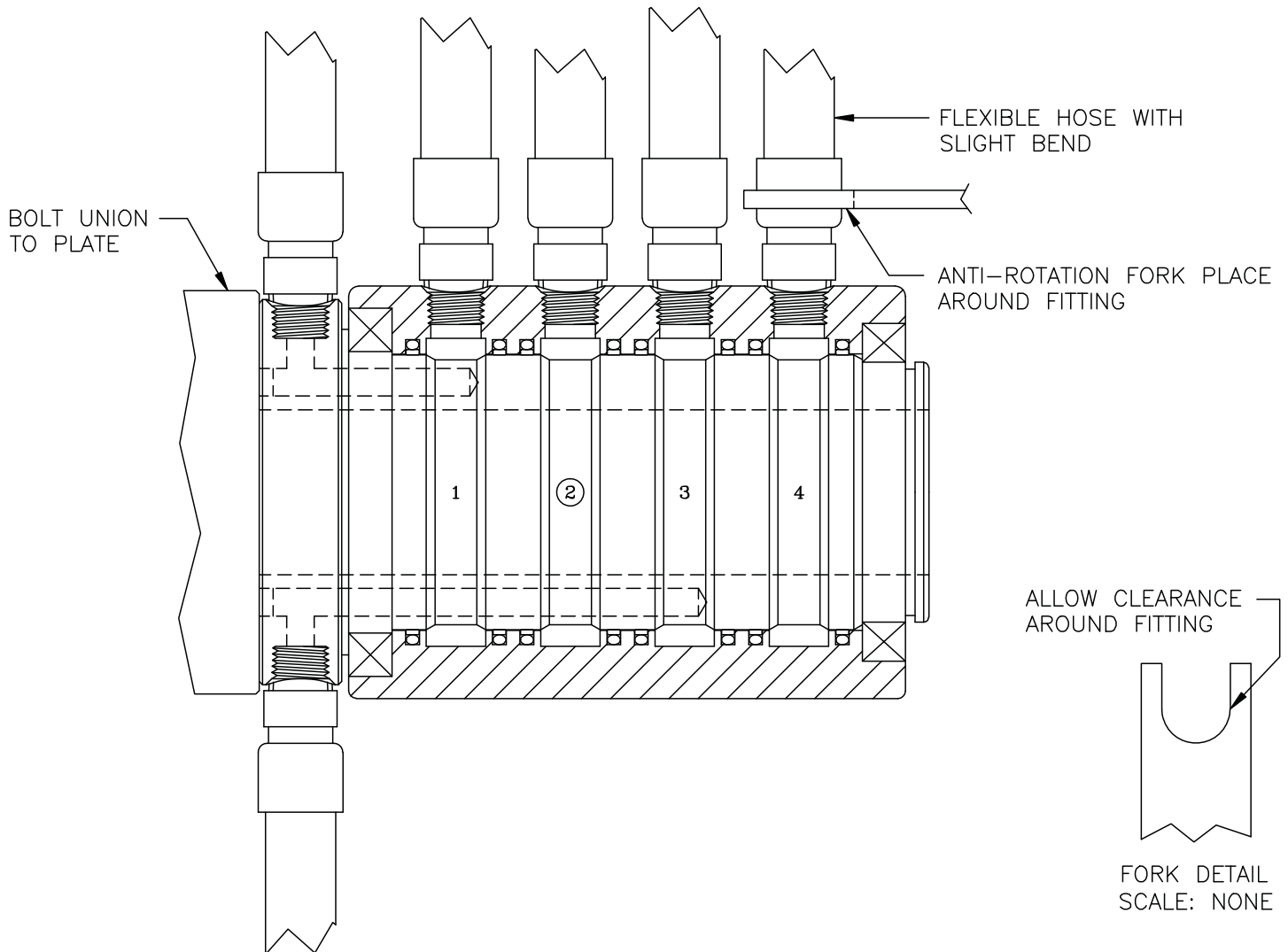


INSTALLATION GUIDE - SERIES 011



PROPER USE AND MOUNTING INSTRUCTIONS

1. Connect all fittings to housing prior to installation.
 - Do not use rigid piping as this will compromise the life of the union.
 - The hose should be flexible and have a slight bend.
 - Extreme bends can reduce the flexibility of the hose.
 - The rubber hose selected should be able to safely handle the working pressure.
 - The hose should be properly supported & should not side load the union.
2. The use of anti-rotation fork is recommended to prevent the housing from rotating.
 - The fork should be placed around one of the housing fittings and allow the union to find its center.
3. Fasten the rotary union to the machine.



ROTARY
SYSTEMS INC