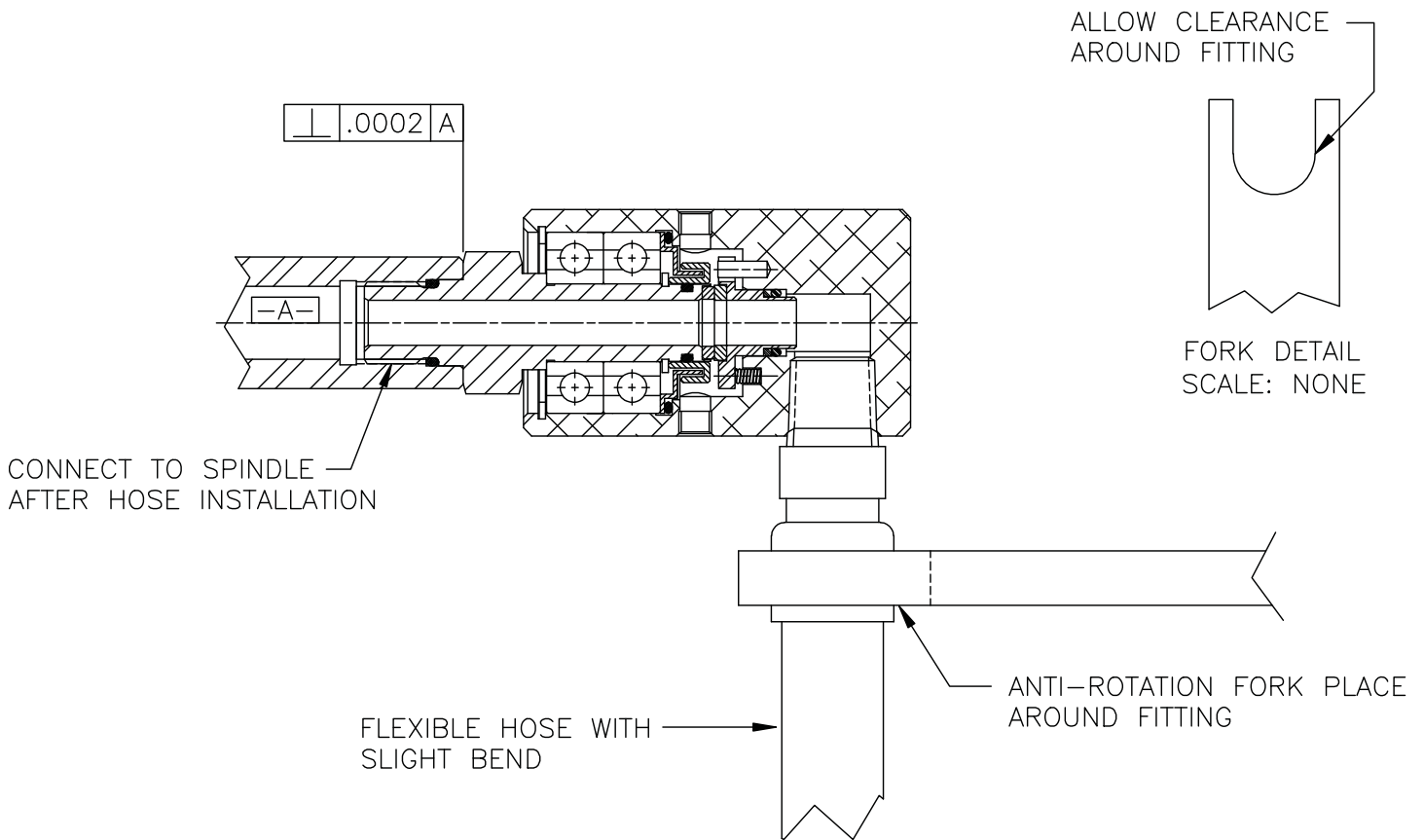


## INSTALLATION GUIDE - SERIES 030



## PROPER USE AND MOUNTING INSTRUCTIONS

1. Connect all fittings to housing prior to installation.
  - Do not use rigid piping as this will compromise the life of the union.
  - The hose should be flexible and have a slight bend.
    - Extreme bends can reduce the flexibility of the hose.
  - The rubber hose selected should be able to safely handle the working pressure.
  - The hose should be properly supported & should not side load the union.
2. Lube o-ring with grease prior to threading it into the spindle
3. Make sure that spindle is clean and free of burrs or dents.
  - Ensure that the pilot is the correct size and the threads match.
4. Attach your preferred method of anti-rotation, such as a fork around the fitting. Anti-rotation must allow the union to find its center. Do not hard mount both the rotor and housing of the union.



**ROTARY**  
SYSTEMS INC